



# NOW AVAILABLE: MERCHANTS COMMONS

PRIME RETAIL / OFFICE – DOWNTOWN SYRACUSE

WASHINGTON ST. PARTNERS

**2,500 - 5,000+/- SF AVAILABLE**



**MERCHANTS COMMONS  
220 South Warren St.  
Syracuse, NY 13202**

**PROMINENT  
LOCATION**

**5,000 +/- SF AVAILABLE**



**SIGNAGE**

Merchants Commons is a mixed-use complex in the heart of the central business district. Co-Tenancy opportunity with Advance Media & Fust Charles Chambers LLP.

- 2,500 - 5,000 +/- SF Layout
- Street level entry
- Prominent signage
- Exclusive location promotion
- Excellent visibility
- Class A finishes
- On-site amenities
- Customized space plan

FOR OTHER LEASING OPPORTUNITIES  
[WashingtonStPartners.com](http://WashingtonStPartners.com)



WASHINGTON ST. PARTNERS

WASHINGTON ST. PARTNERS CORPORATE OFFICES

120 E. Washington Street, Syracuse, NY 13202  
PH 315-426-2624 info@washingtonstpartners.com



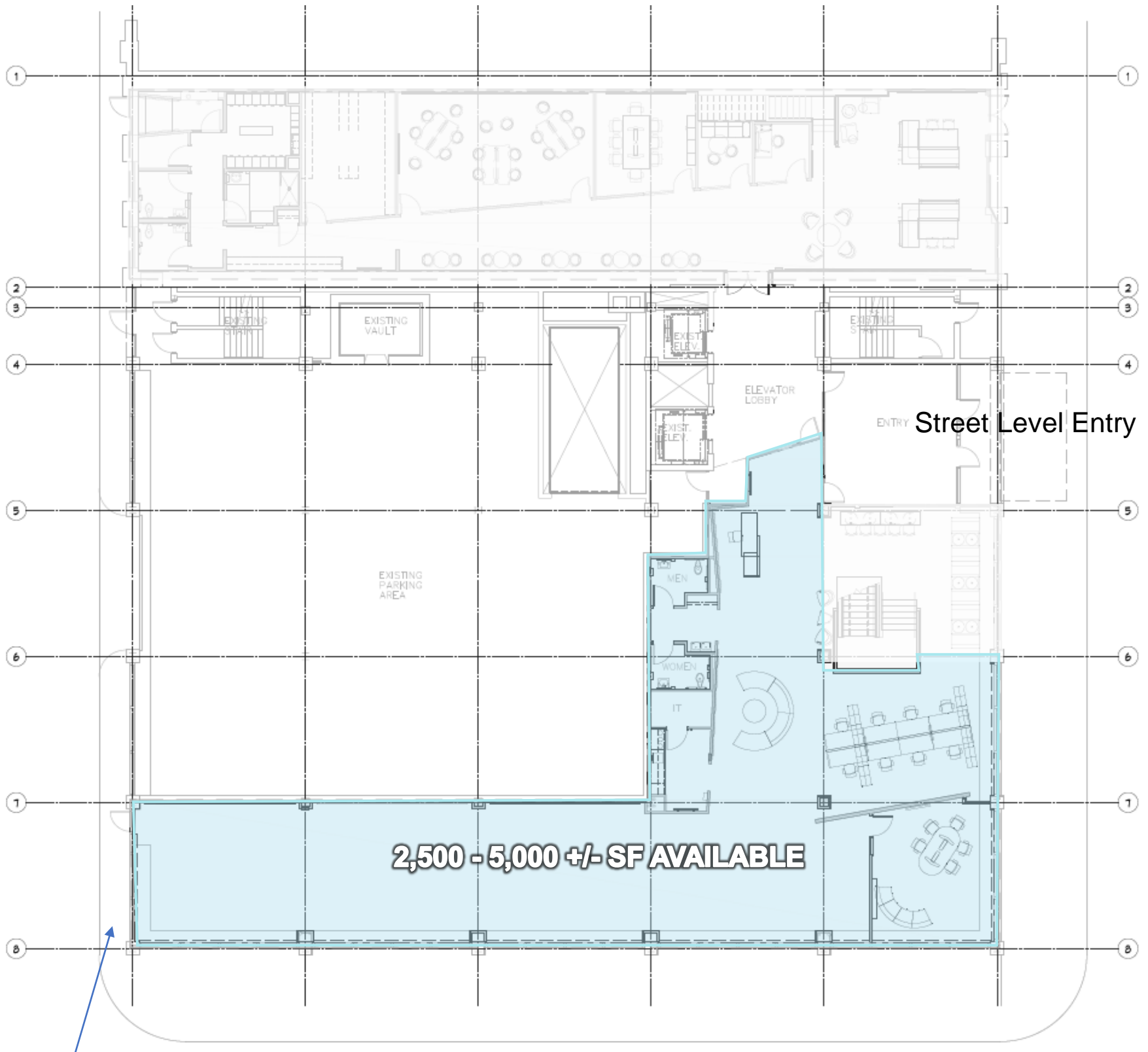
# NOW AVAILABLE: MERCHANTS COMMONS

PRIME RETAIL / OFFICE – DOWNTOWN SYRACUSE

WASHINGTON ST. PARTNERS

**2,500 - 5,000+/- SF AVAILABLE**

## Floor Plan



Additional Entry

FOR OTHER LEASING OPPORTUNITIES  
[WashingtonStPartners.com](http://WashingtonStPartners.com)



WASHINGTON ST. PARTNERS

WASHINGTON ST. PARTNERS CORPORATE OFFICES

120 E. Washington Street, Syracuse, NY 13202  
PH 315-426-2624 info@washingtonstpartners.com



# NOW AVAILABLE: MERCHANTS COMMONS

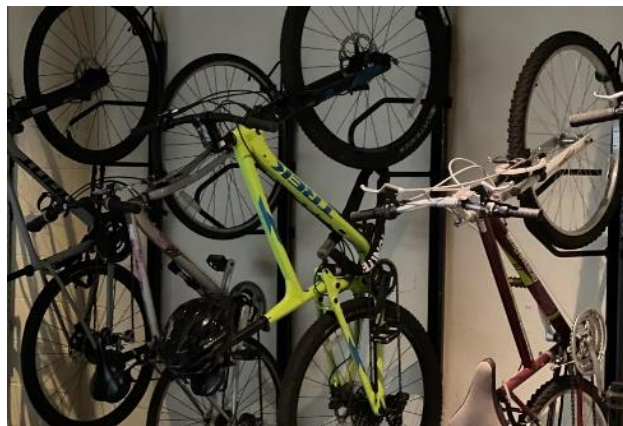
PRIME RETAIL / OFFICE – DOWNTOWN SYRACUSE

WASHINGTON ST. PARTNERS

2,500 - 5,000+/- SF AVAILABLE

## Building Amenities

- Rooftop deck
- Grill area
- Outdoor fire pit
- Fitness center
- Game room
- Bike station
- Pet spa
- Executive parking
- Café works



FOR OTHER LEASING OPPORTUNITIES  
[WashingtonStPartners.com](http://WashingtonStPartners.com)



WASHINGTON ST. PARTNERS CORPORATE OFFICES

120 E. Washington Street, Syracuse, NY 13202  
PH 315-426-2624 info@washingtonstpartners.com